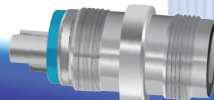


Smart Cleaner™

**Your tool for complete
handpiece maintenance**

- Removes blockages
- Prevents residue buildup
- Easy to use



HENRY SCHEIN®

**PRO
SCORE**
DO-IT-YOURSELF REPAIR & PARTS

137 Commercial Street, Suite 300 Plainview, NY 11803
1-800-726-7365 • Fax: 1-516-719-2140
www.scoredental.com • orders@scoredental.com

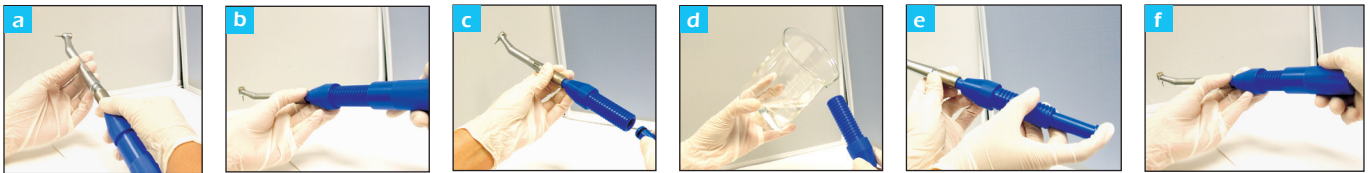
Smart Cleaner™

The Dual Purpose Tool

- Prevents initial residue and particle build-up when used regularly with warm water
- Removes blockages caused by inert biofilm and micro particles carried in the water supply

Quick and Easy to use

- Connect your handpiece or coupler to the Smart Cleaner
- Undo threaded handle
- Remove plunger
- Half-fill the Smart Cleaner with warm water
- Insert the plunger and push
- For tough obstructions, use threaded handle





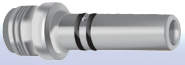
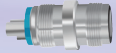
Instructions for Smart Cupper

- Remove the bore cup from the Smart Cupper and insert the bur end into the handpiece
- Position the hole of the bore cup over the blocked spray port in the handpiece
- Place the bore cup (with handpiece attached) into the Smart Cupper and tighten the screw to hold it in place
- Follow the instructions for normal use of the Smart Cleaner

Instructions for Smart Connect

- Connect the Smart Connect to the Smart Cleaner
- Attach the contra angle to the Smart Connect
- Follow the instructions for normal use of the Smart Cleaner



Item Code	Description	
107-9196 \$114.99	Smart Cleaner	
107-2081 \$57.49	Smart Cupper A tool for multi-port spray heads when only one hole is blocked	
107-2211 \$57.49	Smart Connect An adaptor for E-type contra angle handpieces	
107-4734 \$57.49	Smart Tube Used for maintaining air unit tubing	
907-1059 \$199.99	Smart Cleaner - 3 Piece Set Includes Smart Cleaner, Smart Cupper, and Smart Connect	
107-0740 \$229.99	Smart Cleaner - 4 Piece Set Includes Smart Cleaner, Smart Cupper, Smart Connect, and Smart Tube	